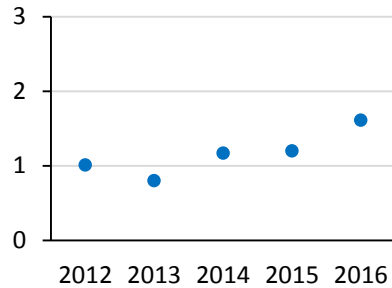


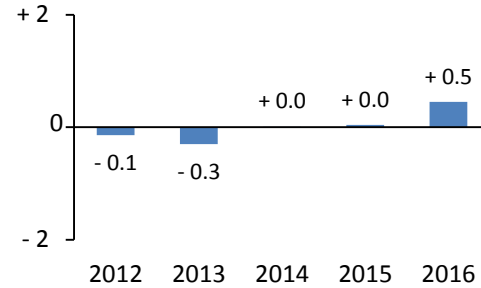
BONUS POINTS

Pangea International School

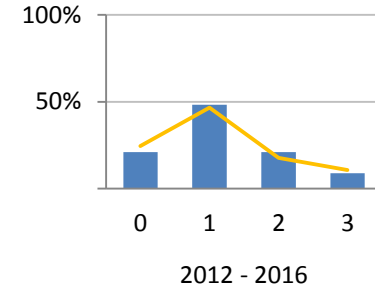
Average Candidate Bonus Points



School Average minus World Average



Bonus Points Distribution



The yellow line shows the shape of the world-wide score distribution.

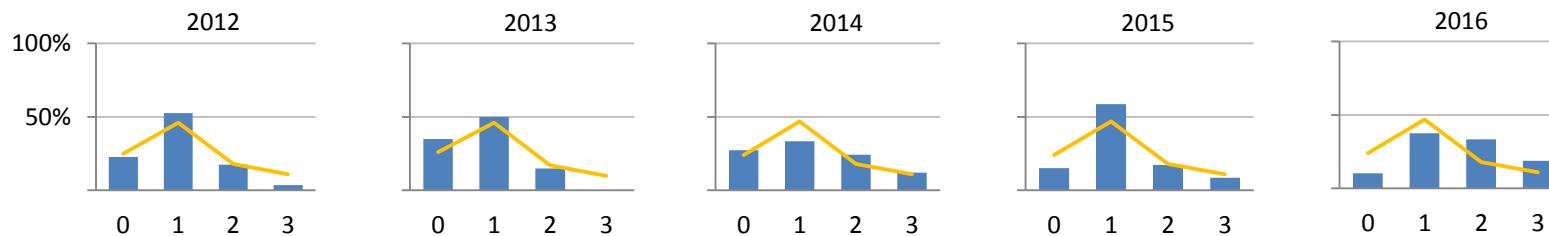
Aggregate Statistics

	2012	2013	2014	2015	2016	5 yr
Students	57	40	33	46	48	224
Median	1.0	1.0	1.0	1.0	2.0	1.0
Average (Avg)	1.0	0.8	1.2	1.2	1.6	1.2
World Avg (WA)	1.2	1.1	1.2	1.2	1.2	1.1
(Avg - WA)	-0.1	-0.3	+0.0	+0.0	+0.5	+0.0
Stat. Significant?	Yes	Yes	No	No	Yes	No

Bonus Points Distributions

	Percentages						Counts					
	2012	2013	2014	2015	2016	5 yr	2012	2013	2014	2015	2016	5 yr
3	4%		12%	9%	19%	9%	2		4	4	9	20
2	18%	15%	24%	17%	33%	21%	10	6	8	8	16	47
1	53%	50%	33%	59%	38%	48%	30	20	11	27	18	108
0	23%	35%	27%	15%	10%	21%	13	14	9	7	5	47
N	4%		3%			1%	2		1			2

Bonus Points Distributions by Year



The yellow lines show the shape of the world-wide score distribution.