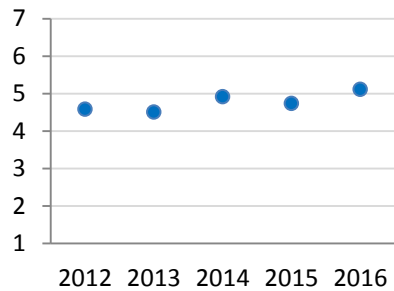


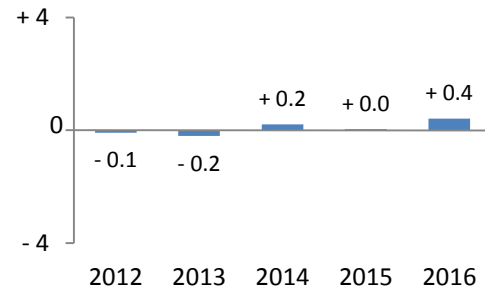
ALL SUBJECTS

Pangea International School

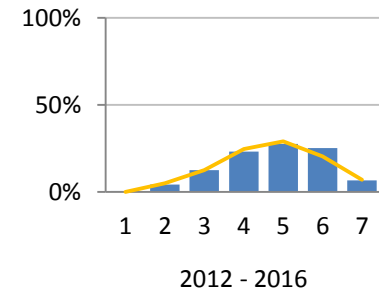
Average Candidate Subject Score



School Average minus World Average



Subject Score Distribution



The yellow line shows the shape of the world-wide score distribution.

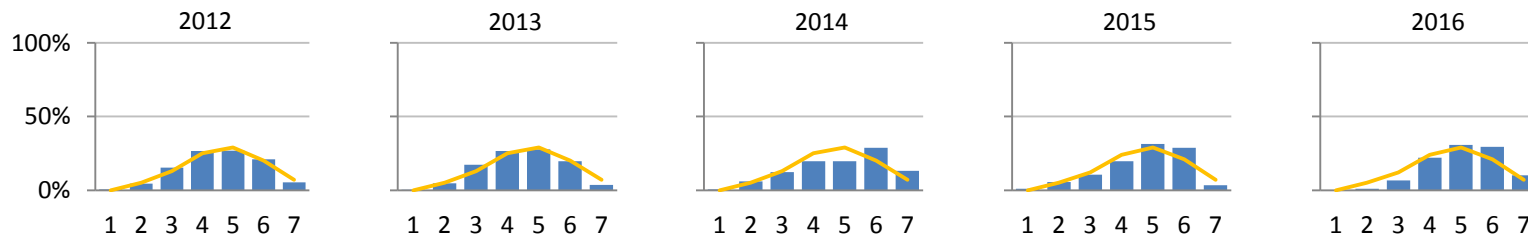
Aggregate Statistics

	2012	2013	2014	2015	2016	5 yr
# of Scores	360	300	220	306	299	1485
Median	5.0	5.0	5.0	5.0	5.0	5.0
Average (Avg)	4.6	4.5	4.9	4.7	5.1	4.8
World Avg (WA)	4.7	4.7	4.7	4.7	4.7	4.7
(Avg - WA)	- 0.1	- 0.2	+ 0.2	+ 0.0	+ 0.4	+ 0.1

Subject Score Distributions

	Percentages						Counts					
	2012	2013	2014	2015	2016	5 yr	2012	2013	2014	2015	2016	5 yr
7	5%	4%	13%	3%	10%	7%	19	11	29	10	30	99
6	21%	20%	29%	29%	29%	25%	75	59	63	88	88	373
5	27%	28%	20%	31%	31%	28%	96	83	43	96	92	410
4	27%	27%	20%	20%	22%	23%	95	80	43	60	66	344
3	15%	17%	12%	10%	7%	13%	55	52	27	32	20	186
2	4%	5%	6%	6%	1%	4%	16	14	13	17	3	63
1	1%	0%	0%	1%		0%	2	1	1	3		7

Subject Score Distributions by Year



The yellow lines show the shape of the world-wide score distribution.